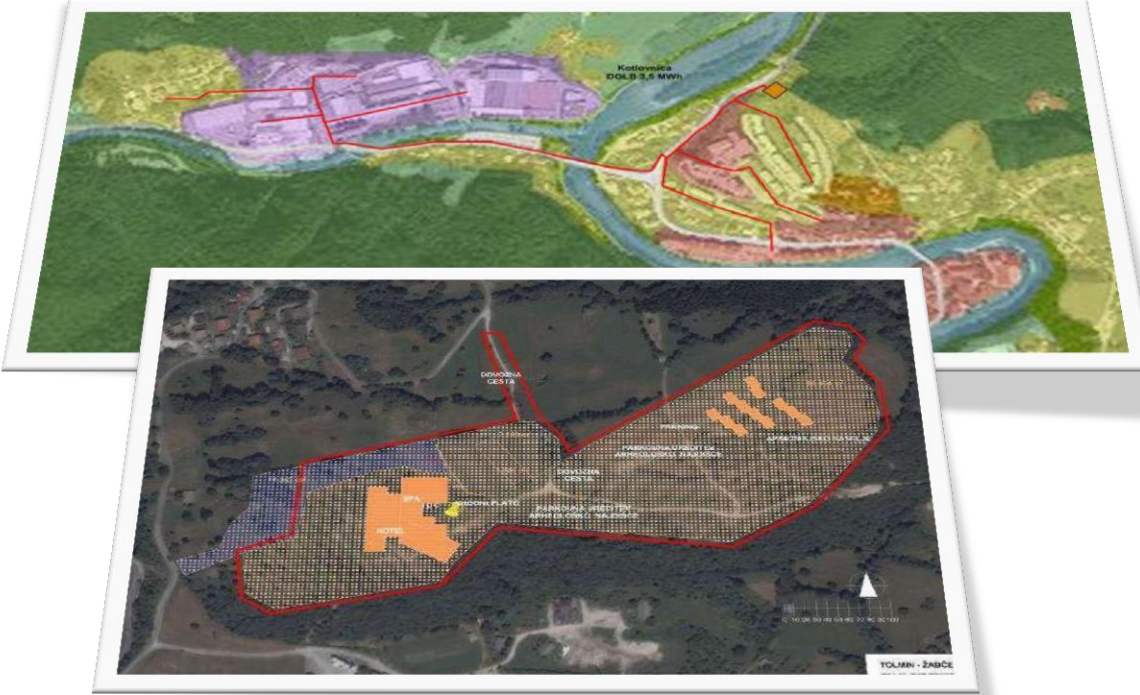


Assessments of acceptability/suitability of the locations for placement of different energy infrastructure (RES) in the space (supported by GIS tools)



A comprehensive review of potentially suitable areas for the production of energy from RES includes:

- assessment of the potential heat supply from district heating systems, including micro district heating systems,
- assessment of the energy demand for heating and hot water in households, farms and services,
- assessment of the potential to generate heat and / or electricity from RES in individual systems, households, farms and services,
- recommendations and guidelines and
- complete digital graphic representation of the estimated potential (GIS).

Aim: to prepare professional starting points for support of inter-municipal spatial planning of energy infrastructure in the pilot region and to (consequently) support the process of transition to a low-carbon society.

- Graphic demonstration of the possibility for energy self-sufficiency of the region.
- Input for MSPs and interesting for potential investors.

